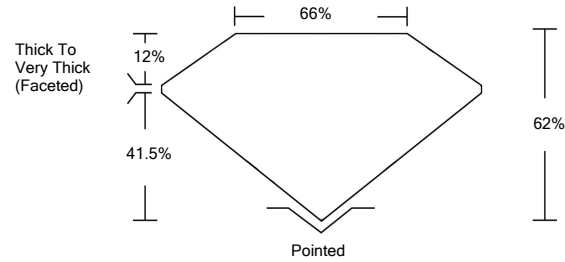




LG478123984

LABORATORY GROWN DIAMOND REPORT

PROPORTIONS

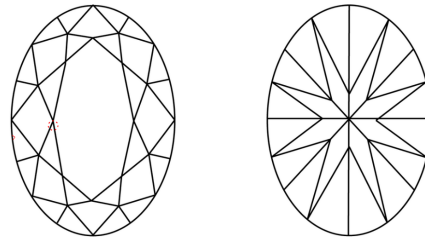


GRADING SCALES

Table with 5 columns for Color Grading Scale (CL, NC, FT, VLT, LT) and Clarity (10x) Grading Scale (FL, IF, VVS, VS, SI, I). Includes sub-labels like 'COLORLESS D-F', 'NEAR COLORLESS G-J', etc.

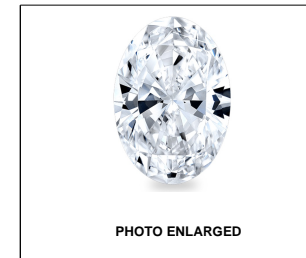
The laboratory grown diamond described in this Report (Report) has been graded, tested, analyzed, examined and/or inscribed by International Gemological Institute (IGI). A laboratory grown diamond is one that has essentially the same chemical, physical and optical properties as a mined diamond...

CLARITY CHARACTERISTICS



KEY TO SYMBOLS

Red symbols indicate internal characteristics. Green symbols indicate external characteristics.



LASERSCRIBE SM

06/12/2021

IGI Report Number LG478123984

Shape and Cutting Style OVAL BRILLIANT

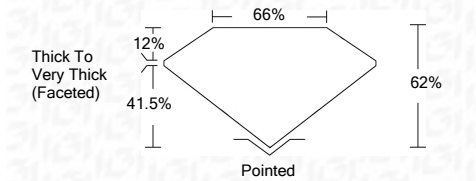
Measurements 7.79 x 5.53 x 3.43 mm

GRADING RESULTS

Carat Weight 1.02 CARAT

Color Grade E

Clarity Grade VS 1



ADDITIONAL GRADING INFORMATION

Polish VERY GOOD

Symmetry VERY GOOD

Fluorescence NONE

Inscription(s) LABGROWN IGI LG478123984

Comments: As Grown - No indication of post-growth treatment. This Laboratory Grown Diamond was created by High Pressure High Temperature (HPHT) growth process. Type II



IGI

06/12/2021 IGI Report No. LG478123984 OVAL BRILLIANT 7.79 x 5.53 x 3.43 mm 1.02 CARAT E VS 1 62% 66% Thick To Very Thick (Faceted) Pointed VERY GOOD VERY GOOD NONE LABGROWN IGI LG478123984

As Grown - No indication of post-growth treatment. This Laboratory Grown Diamond was created by High Pressure High Temperature (HPHT) growth process. Type II

