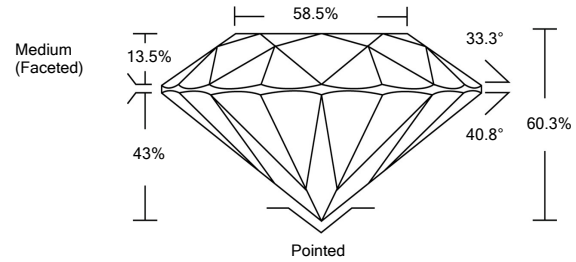




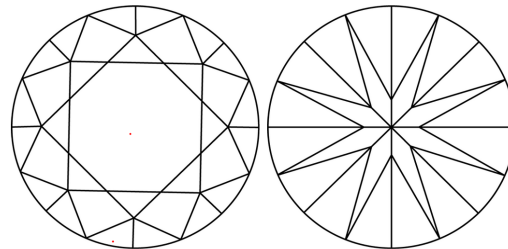
LG478109329

LABORATORY GROWN DIAMOND REPORT

PROPORTIONS



CLARITY CHARACTERISTICS



KEY TO SYMBOLS

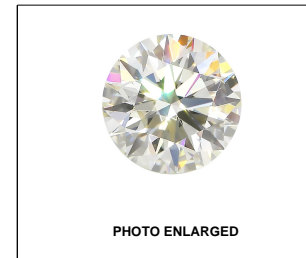
Red symbols indicate internal characteristics. Green symbols indicate external characteristics.

GRADING SCALES

COLOR GRADING SCALE	CL	NC	FT	VL	LT	
	COLORLESS D-F	NEAR COLORLESS G-J	FAINT K-M	VERY LIGHT N-R	LIGHT S-Z	
CLARITY (10x) GRADING SCALE	FL	IF	VVS	VS	SI	I
	FLAWLESS INTERNALLY FLAWLESS	VERY VERY SLIGHTLY INCLUDED	VERY SLIGHTLY INCLUDED	SLIGHTLY INCLUDED	INCLUDED	

The laboratory grown diamond described in this Report (Report) has been graded, tested, analyzed, examined and/or inscribed by International Gemological Institute (IGI). A laboratory grown diamond is one that has essentially the same chemical, physical and optical properties as a mined diamond, with the exception of being grown by man (a manufactured product). IGI employs and utilizes those techniques and equipment currently available to IGI, including, without limitation, 10X magnification, corrected triplet loupe, binocular microscope, master color comparison stones, non-contact-optical measuring device, Diamond Sure™, Diamond View™, Spectrophotometer and such other instruments and/or processes as deemed appropriate by IGI. This Report includes advanced security features. A duly accredited gemologist or jeweler can advise you with respect to the importance of and interrelationship between cut, color, clarity and carat weight. THIS REPORT IS NEITHER A GUARANTEE, VALUATION, NOR APPRAISAL OF THE GEMSTONE DESCRIBED HEREIN. PLEASE REVIEW THE LIMITATIONS AND RESTRICTIONS SET FORTH ONLINE. FOR ADDITIONAL INFORMATION, IMPORTANT LIMITATIONS AND DISCLAIMERS, PLEASE GO TO WWW.IGI.ORG OR CALL 1-888-BUY-IGIS.

© INTERNATIONAL GEMOLOGICAL INSTITUTE, INC.



LABGROWN IGI LG478109329

LASERSCRIBESM

06/14/2021

IGI Report Number **LG478109329**

Shape and Cutting Style **ROUND BRILLIANT**

Measurements **8.36 - 8.43 x 5.06 mm**

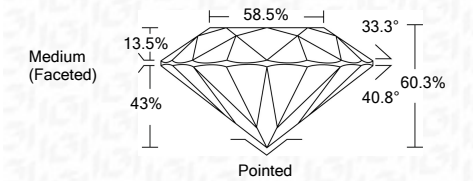
GRADING RESULTS

Carat Weight **2.17 CARATS**

Color Grade **E**

Clarity Grade **VVS 2**

Cut Grade **IDEAL**



ADDITIONAL GRADING INFORMATION

Polish **EXCELLENT**

Symmetry **EXCELLENT**

Fluorescence **NONE**

Inscription(s) **LABGROWN IGI LG478109329**

Comments: This Laboratory Grown Diamond was created by Chemical Vapor Deposition (CVD) growth process and may include post-growth treatment. Type IIa



IGI

IGI Report No. LG478109329	ROUND BRILLIANT	2.17 CARATS	E	Pointed
8.36 - 8.43 x 5.06 mm	Carat Weight	VVS 2	IDEAL	EXCELLENT
Color Grade	2.17 CARATS	60.3%	60.3%	EXCELLENT
Clarity Grade	2.17 CARATS	58.5%	58.5%	EXCELLENT
Cut Grade	2.17 CARATS	Medium (Faceted)		NONE
Depth	2.17 CARATS			LABGROWN IGI LG478109329
Table	2.17 CARATS			
Grade	2.17 CARATS			
Culet	2.17 CARATS			
Polish	2.17 CARATS			
Symmetry	2.17 CARATS			
Fluorescence	2.17 CARATS			
Inscription(s)	2.17 CARATS			

06/14/2021

IGI Report No. LG478109329

ROUND BRILLIANT

8.36 - 8.43 x 5.06 mm

Carat Weight

Color Grade

Clarity Grade

Cut Grade

Depth

Table

Grade

Culet

Polish

Symmetry

Fluorescence

Inscription(s)

LABGROWN IGI LG478109329

Comments:

This Laboratory Grown Diamond was created by Chemical Vapor Deposition (CVD) growth process and may include post-growth treatment.

Type IIa

