



LG470125408

LABORATORY GROWN DIAMOND REPORT

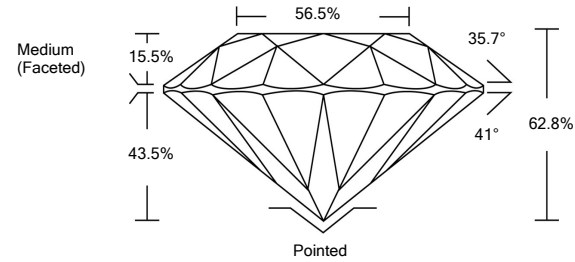
05/14/2021
IGI Report Number LG470125408
Shape and Cutting Style ROUND BRILLIANT
Measurements 7.93 - 8.07 x 5.03 mm

GRADING RESULTS
Carat Weight 2.00 CARATS
Color Grade E
Clarity Grade VS 2
Cut Grade EXCELLENT

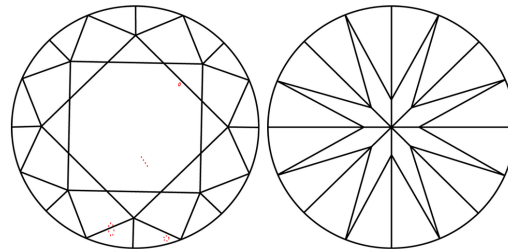
ADDITIONAL GRADING INFORMATION
Polish EXCELLENT
Symmetry EXCELLENT
Fluorescence NONE
Inscription(s) LABGROWN IGI LG470125408

Comments: This Laboratory Grown Diamond was created by Chemical Vapor Deposition (CVD) growth process and may include post-growth treatment. Type IIa

PROPORTIONS



CLARITY CHARACTERISTICS



KEY TO SYMBOLS

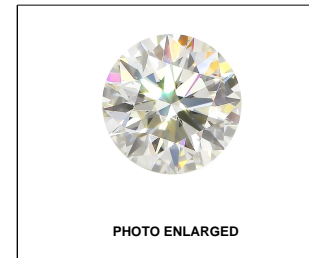
Red symbols indicate internal characteristics. Green symbols indicate external characteristics.

GRADING SCALES

Table with 5 columns for Color Grading Scale (CL to LT) and Clarity (10x) Grading Scale (FL to I).

The laboratory grown diamond described in this Report (Report) has been graded, tested, analyzed, examined and/or inscribed by International Gemological Institute (IGI). A laboratory grown diamond is one that has essentially the same chemical, physical and optical properties as a mined diamond...

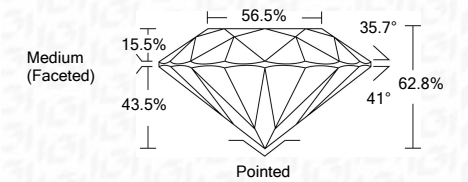
© INTERNATIONAL GEMOLOGICAL INSTITUTE, INC.



LABGROWN IGI LG470125408

LASERSCRIBE SM

05/14/2021
IGI Report Number LG470125408
Shape and Cutting Style ROUND BRILLIANT
Measurements 7.93 - 8.07 x 5.03 mm
GRADING RESULTS
Carat Weight 2.00 CARATS
Color Grade E
Clarity Grade VS 2
Cut Grade EXCELLENT



ADDITIONAL GRADING INFORMATION
Polish EXCELLENT
Symmetry EXCELLENT
Fluorescence NONE
Inscription(s) LABGROWN IGI LG470125408

Comments: This Laboratory Grown Diamond was created by Chemical Vapor Deposition (CVD) growth process and may include post-growth treatment. Type IIa



IGI

05/14/2021
IGI Report No. LG470125408
ROUND BRILLIANT
Carat Weight 2.00 CARATS
Color Grade E
Clarity Grade VS 2
Cut Grade EXCELLENT
Depth 62.8%
Table 56.5%
Girdle Medium (Faceted)
Culet Pointed
Polish EXCELLENT
Symmetry EXCELLENT
Fluorescence NONE
Inscription(s) LABGROWN IGI LG470125408
Comments: This Laboratory Grown Diamond was created by Chemical Vapor Deposition (CVD) growth process and may include post-growth treatment. Type IIa