



LG470125102

LABORATORY GROWN DIAMOND REPORT

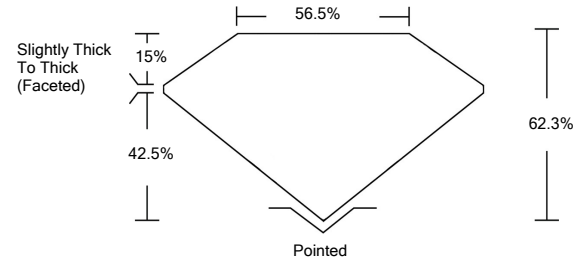
05/12/2021
IGI Report Number LG470125102
Shape and Cutting Style OVAL BRILLIANT
Measurements 9.02 x 6.52 x 4.06 mm

GRADING RESULTS
Carat Weight 1.53 CARAT
Color Grade E
Clarity Grade SI 1

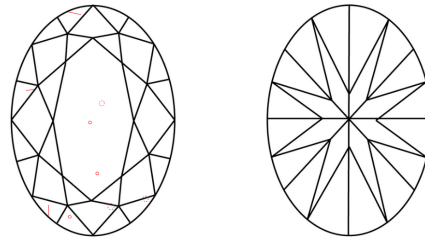
ADDITIONAL GRADING INFORMATION
Polish VERY GOOD
Symmetry EXCELLENT
Fluorescence NONE
Inscription(s) LABGROWN IGI LG470125102

Comments: This Laboratory Grown Diamond was created by Chemical Vapor Deposition (CVD) growth process and may include post-growth treatment. Type IIa

PROPORTIONS



CLARITY CHARACTERISTICS



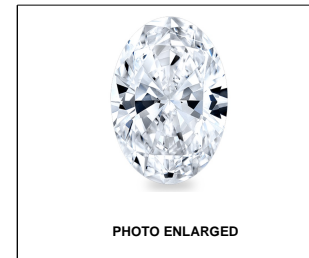
KEY TO SYMBOLS

Red symbols indicate internal characteristics. Green symbols indicate external characteristics.

GRADING SCALES

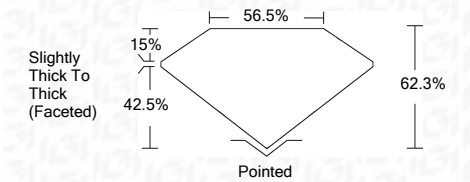
Table with 5 columns for Color Grading Scale (CL, NC, FT, VLT, LT) and Clarity (10x) Grading Scale (FL, IF, VVS, VS, SI, I).

The laboratory grown diamond described in this Report (Report) has been graded, tested, analyzed, examined and/or inscribed by International Gemological Institute (IGI). A laboratory grown diamond is one that has essentially the same chemical, physical and optical properties as a mined diamond...



LASERSCRIBE SM

05/12/2021
IGI Report Number LG470125102
Shape and Cutting Style OVAL BRILLIANT
Measurements 9.02 x 6.52 x 4.06 mm
GRADING RESULTS
Carat Weight 1.53 CARAT
Color Grade E
Clarity Grade SI 1



ADDITIONAL GRADING INFORMATION
Polish VERY GOOD
Symmetry EXCELLENT
Fluorescence NONE
Inscription(s) LABGROWN IGI LG470125102

Comments: This Laboratory Grown Diamond was created by Chemical Vapor Deposition (CVD) growth process and may include post-growth treatment. Type IIa



IGI

05/12/2021
IGI Report No. LG470125102
OVAL BRILLIANT
Carat Weight 1.53 CARAT
Color Grade E
Clarity Grade SI 1
Depth 62.3%
Table 56.5%
Grade Slightly Thick To Thick (Faceted)
Cut Pointed
Polish VERY GOOD
Symmetry EXCELLENT
Fluorescence NONE
Inscription(s) LABGROWN IGI LG470125102
Comments: This Laboratory Grown Diamond was created by Chemical Vapor Deposition (CVD) growth process and may include post-growth treatment. Type IIa

