



LABORATORY GROWN DIAMOND REPORT

LG467129273

GRADING SCALES

Table with 5 columns for Color Grading Scale (CL, NC, FT, VLT, LT) and Clarity (10x) Grading Scale (FL, IF, VVS, VS, SI, I) with corresponding descriptions.

The laboratory grown diamond described in this Report (Report) has been graded, tested, analyzed, examined and/or inscribed by International Gemological Institute (IGI). A laboratory grown diamond is one that has essentially the same chemical, physical and optical properties as a mined diamond...

04/10/2021

IGI Report Number LG467129273

Shape and Cutting Style ROUND BRILLIANT

Measurements 6.98 - 7.01 x 4.25 mm

GRADING RESULTS

Carat Weight 1.26 CARAT

Color Grade E

Clarity Grade VS 2

Cut Grade IDEAL

04/10/2021

IGI Report Number LG467129273

Shape and Cutting Style ROUND BRILLIANT

Measurements 6.98 - 7.01 x 4.25 mm

GRADING RESULTS

Carat Weight 1.26 CARAT

Color Grade E

Clarity Grade VS 2

Cut Grade IDEAL

ADDITIONAL GRADING INFORMATION

Polish EXCELLENT

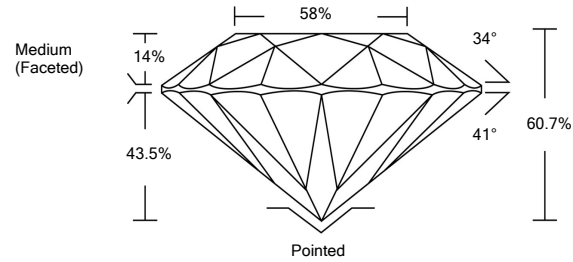
Symmetry EXCELLENT

Fluorescence NONE

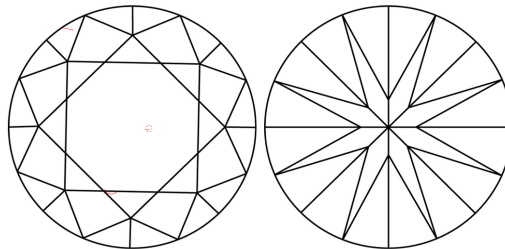
Inscription(s) LABGROWN IGI LG467129273

Comments: This Laboratory Grown Diamond was created by Chemical Vapor Deposition (CVD) growth process and may include post-growth treatment. Type IIa

PROPORTIONS

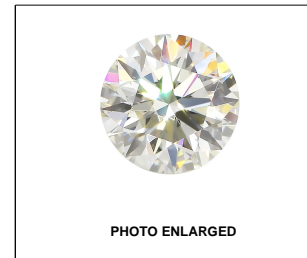


CLARITY CHARACTERISTICS



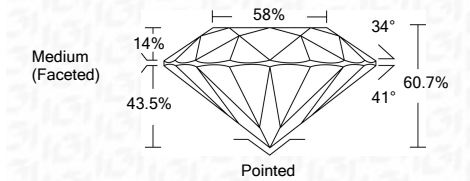
KEY TO SYMBOLS

Red symbols indicate internal characteristics. Green symbols indicate external characteristics.



LABGROWN IGI LG467129273

LASERSCRIBESM



ADDITIONAL GRADING INFORMATION

Polish EXCELLENT

Symmetry EXCELLENT

Fluorescence NONE

Inscription(s) LABGROWN IGI LG467129273

Comments: This Laboratory Grown Diamond was created by Chemical Vapor Deposition (CVD) growth process and may include post-growth treatment. Type IIa



IGI

Summary table of report details: 04/10/2021, IGI Report No. LG467129273, ROUND BRILLIANT, 6.98 - 7.01 x 4.25 mm, 1.26 CARAT, E, VS 2, IDEAL, 60.7%, 58%, Medium (Faceted), Pointed, EXCELLENT, EXCELLENT, NONE, LABGROWN IGI LG467129273.