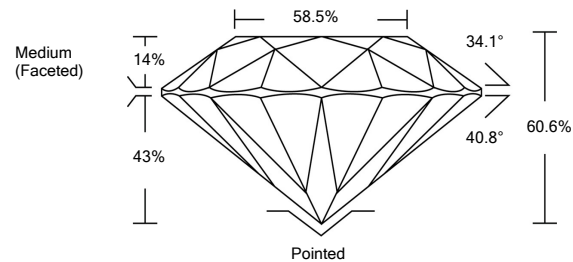




LG467129266

LABORATORY GROWN DIAMOND REPORT

PROPORTIONS

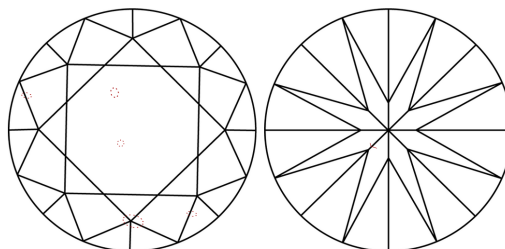


GRADING SCALES

Table with 2 main sections: COLOR GRADING SCALE (CL to LT) and CLARITY (10x) GRADING SCALE (FL to I).

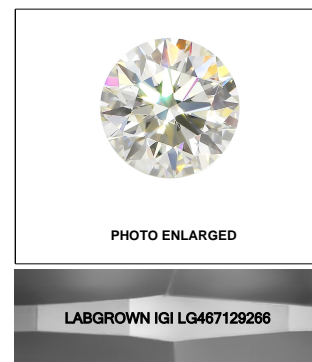
The laboratory grown diamond described in this Report (Report) has been graded, tested, analyzed, examined and/or inscribed by International Gemological Institute (IGI). A laboratory grown diamond is one that has essentially the same chemical, physical and optical properties as a mined diamond...

CLARITY CHARACTERISTICS



KEY TO SYMBOLS

Red symbols indicate internal characteristics. Green symbols indicate external characteristics.



LASERSCRIBE<sup>SM</sup>

04/10/2021

IGI Report Number LG467129266

Shape and Cutting Style ROUND BRILLIANT

Measurements 6.89 - 6.93 x 4.18 mm

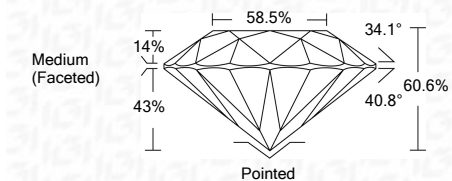
GRADING RESULTS

Carat Weight 1.22 CARAT

Color Grade F

Clarity Grade SI 1

Cut Grade IDEAL



ADDITIONAL GRADING INFORMATION

Polish EXCELLENT

Symmetry EXCELLENT

Fluorescence NONE

Inscription(s) LABGROWN IGI LG467129266

Comments: This Laboratory Grown Diamond was created by Chemical Vapor Deposition (CVD) growth process and may include post-growth treatment. Type IIa



Summary table of diamond characteristics: 04/10/2021, IGI Report No. LG467129266, ROUND BRILLIANT, 6.89 - 6.93 x 4.18 mm, 1.22 CARAT, F, SI 1, IDEAL, 60.6%, 58.5%, Medium (Faceted), Pointed, EXCELLENT, EXCELLENT, NONE, LABGROWN IGI LG467129266.

