



LABORATORY GROWN DIAMOND REPORT

LG467129010

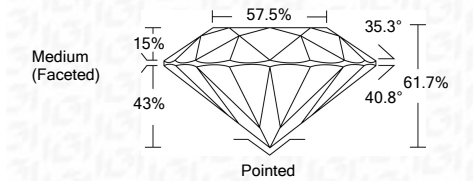
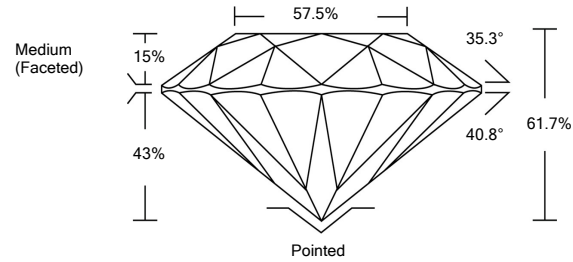
GRADING SCALES

Table with 5 columns for Color Grading Scale (CL, NC, FT, VLT, LT) and Clarity (10x) Grading Scale (FL, IF, VVS, VS, SI, I) with corresponding descriptions.

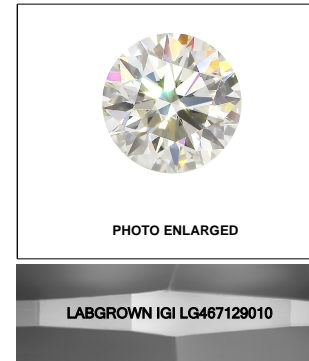
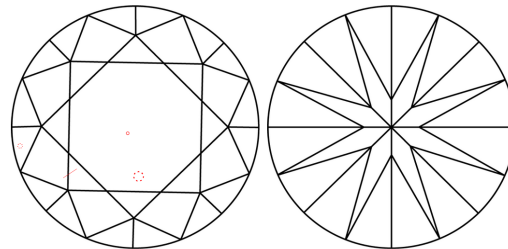
The laboratory grown diamond described in this Report (Report) has been graded, tested, analyzed, examined and/or inscribed by International Gemological Institute (IGI). A laboratory grown diamond is one that has essentially the same chemical, physical and optical properties as a mined diamond...

03/22/2021 IGI Report Number LG467129010 Shape and Cutting Style ROUND BRILLIANT Measurements 8.33 - 8.36 x 5.15 mm GRADING RESULTS Carat Weight 2.20 CARATS Color Grade E Clarity Grade SI 1 Cut Grade IDEAL

PROPORTIONS



CLARITY CHARACTERISTICS



KEY TO SYMBOLS

Red symbols indicate internal characteristics. Green symbols indicate external characteristics.

ADDITIONAL GRADING INFORMATION Polish EXCELLENT Symmetry EXCELLENT Fluorescence NONE Inscription(s) LABGROWN IGI LG467129010

Comments: This Laboratory Grown Diamond was created by Chemical Vapor Deposition (CVD) growth process and may include post-growth treatment. Type IIa

03/22/2021 IGI Report Number LG467129010 Shape and Cutting Style ROUND BRILLIANT Measurements 8.33 - 8.36 x 5.15 mm

GRADING RESULTS Carat Weight 2.20 CARATS Color Grade E Clarity Grade SI 1 Cut Grade IDEAL

ADDITIONAL GRADING INFORMATION Polish EXCELLENT Symmetry EXCELLENT Fluorescence NONE Inscription(s) LABGROWN IGI LG467129010

Comments: This Laboratory Grown Diamond was created by Chemical Vapor Deposition (CVD) growth process and may include post-growth treatment. Type IIa



IGI

03/22/2021 IGI Report No. LG467129010 ROUND BRILLIANT 8.33 - 8.36 x 5.15 mm Carat Weight 2.20 CARATS Color Grade E Clarity Grade SI 1 Cut Grade IDEAL Depth 61.7% Table 57.5% Girdle 61.7% Medium (Faceted) Culet Pointed Polish EXCELLENT Symmetry EXCELLENT Fluorescence NONE Inscription(s) LABGROWN IGI LG467129010 Comments: This Laboratory Grown Diamond was created by Chemical Vapor Deposition (CVD) growth process and may include post-growth treatment. Type IIa