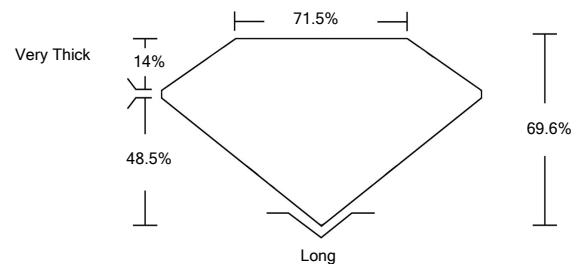




LG462166681

LABORATORY GROWN DIAMOND REPORT

PROPORTIONS

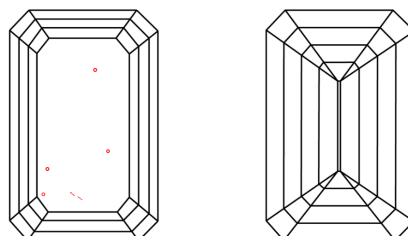


GRADING SCALES

Table with 5 columns for Color Grading Scale (CL, NC, FT, VLT, LT) and Clarity (10x) Grading Scale (FL, IF, VVS, VS, SI, I). Includes sub-labels like 'COLORLESS D-F', 'NEAR COLORLESS G-J', etc.

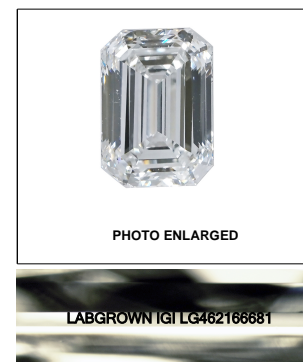
The laboratory grown diamond described in this Report (Report) has been graded, tested, analyzed, examined and/or inscribed by International Gemological Institute (IGI). A laboratory grown diamond is one that has essentially the same chemical, physical and optical properties as a mined diamond...

CLARITY CHARACTERISTICS



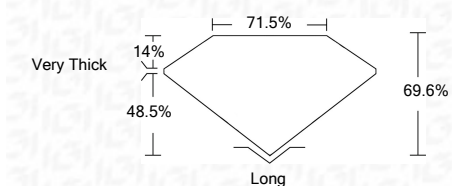
KEY TO SYMBOLS

Red symbols indicate internal characteristics. Green symbols indicate external characteristics.



LASERSCRIBESM

02/11/2021 IGI Report Number LG462166681 Shape and Cutting Style EMERALD CUT Measurements 9.65 x 7.14 x 4.97 mm GRADING RESULTS Carat Weight 3.73 CARATS Color Grade G Clarity Grade VS 2



ADDITIONAL GRADING INFORMATION

Polish VERY GOOD Symmetry VERY GOOD Fluorescence NONE Inscription(s) LABGROWN IGI LG462166681

Comments: This Laboratory Grown Diamond was created by Chemical Vapor Deposition (CVD) growth process and may include post-growth treatment. Type IIa

02/11/2021 IGI Report Number LG462166681 Shape and Cutting Style EMERALD CUT Measurements 9.65 x 7.14 x 4.97 mm

GRADING RESULTS Carat Weight 3.73 CARATS Color Grade G Clarity Grade VS 2

ADDITIONAL GRADING INFORMATION Polish VERY GOOD Symmetry VERY GOOD Fluorescence NONE Inscription(s) LABGROWN IGI LG462166681

Comments: This Laboratory Grown Diamond was created by Chemical Vapor Deposition (CVD) growth process and may include post-growth treatment. Type IIa



IGI

02/11/2021 IGI Report No. LG462166681 EMERALD CUT Carat Weight 9.65 x 7.14 x 4.97 mm Color Grade G Clarity Grade VS 2 Depth 69.6% Table 71.5% Girdle Very Thick Culet Long Polish VERY GOOD Symmetry VERY GOOD Fluorescence NONE Inscription(s) LABGROWN IGI LG462166681 Comments: This Laboratory Grown Diamond was created by Chemical Vapor Deposition (CVD) growth process and may include post-growth treatment. Type IIa