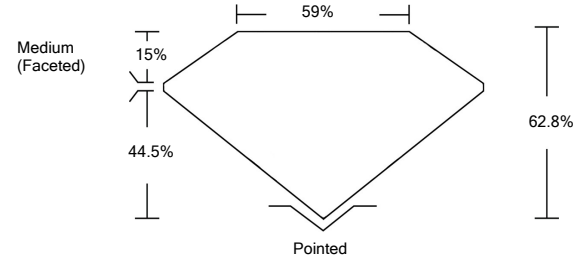




LG462156154

LABORATORY GROWN DIAMOND REPORT

PROPORTIONS

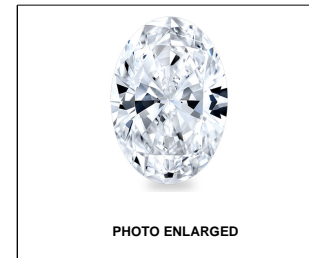


GRADING SCALES

Table with 5 columns for Color Grading Scale (CL to LT) and Clarity (10x) Grading Scale (FL to I).

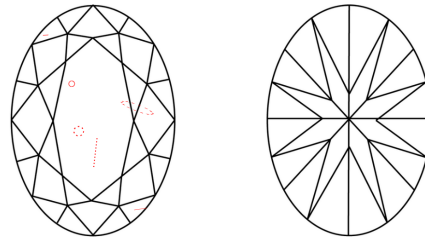
The laboratory grown diamond described in this Report (Report) has been graded, tested, analyzed, examined and/or inscribed by International Gemological Institute (IGI). A laboratory grown diamond is one that has essentially the same chemical, physical and optical properties as a mined diamond...

© INTERNATIONAL GEMOLOGICAL INSTITUTE, INC.



LASERSCRIBESM

CLARITY CHARACTERISTICS



KEY TO SYMBOLS

Red symbols indicate internal characteristics. Green symbols indicate external characteristics.

02/12/2021 IGI Report Number LG462156154 Shape and Cutting Style OVAL BRILLIANT Measurements 9.26 x 6.61 x 4.15 mm

GRADING RESULTS

Carat Weight 1.59 CARAT Color Grade I Clarity Grade SI 1

ADDITIONAL GRADING INFORMATION

Polish EXCELLENT Symmetry EXCELLENT Fluorescence NONE Inscription(s) LABGROWN IGI LG462156154

Comments: This Laboratory Grown Diamond was created by Chemical Vapor Deposition (CVD) growth process and may include post-growth treatment. Type IIa

02/12/2021 IGI Report Number LG462156154 Shape and Cutting Style OVAL BRILLIANT Measurements 9.26 x 6.61 x 4.15 mm

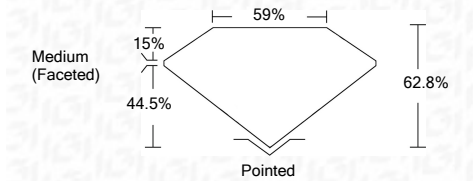
GRADING RESULTS

Carat Weight 1.59 CARAT Color Grade I Clarity Grade SI 1

ADDITIONAL GRADING INFORMATION

Polish EXCELLENT Symmetry EXCELLENT Fluorescence NONE Inscription(s) LABGROWN IGI LG462156154

Comments: This Laboratory Grown Diamond was created by Chemical Vapor Deposition (CVD) growth process and may include post-growth treatment. Type IIa



IGI

02/12/2021 IGI Report No. LG462156154 OVAL BRILLIANT 9.26 x 6.61 x 4.15 mm 1.59 CARAT I SI 1 62.8% 59% Medium (Faceted) Pointed EXCELLENT EXCELLENT NONE LABGROWN IGI LG462156154

Comments: This Laboratory Grown Diamond was created by Chemical Vapor Deposition (CVD) growth process and may include post-growth treatment. Type IIa