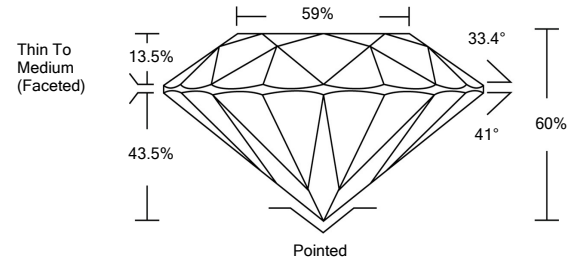




LABORATORY GROWN DIAMOND REPORT

LG462140122

PROPORTIONS



GRADING SCALES

Table with 5 columns for Color Grading Scale (CL to LT) and Clarity (10x) Grading Scale (FL to I).

The laboratory grown diamond described in this Report (Report) has been graded, tested, analyzed, examined and/or inscribed by International Gemological Institute (IGI). A laboratory grown diamond is one that has essentially the same chemical, physical and optical properties as a mined diamond...

02/08/2021

IGI Report Number LG462140122

Shape and Cutting Style ROUND BRILLIANT

Measurements 6.30 - 6.33 x 3.79 mm

GRADING RESULTS

Carat Weight 0.92 CARAT

Color Grade E

Clarity Grade SI 1

Cut Grade IDEAL

02/08/2021

IGI Report Number LG462140122

Shape and Cutting Style ROUND BRILLIANT

Measurements 6.30 - 6.33 x 3.79 mm

GRADING RESULTS

Carat Weight 0.92 CARAT

Color Grade E

Clarity Grade SI 1

Cut Grade IDEAL

ADDITIONAL GRADING INFORMATION

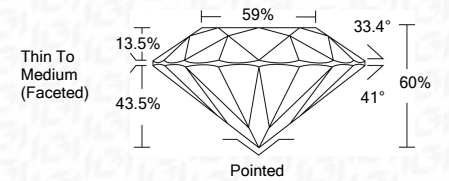
Polish VERY GOOD

Symmetry EXCELLENT

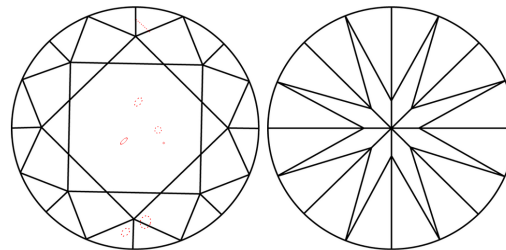
Fluorescence NONE

Inscription(s) LABGROWN IGI LG462140122

Comments: This Laboratory Grown Diamond was created by Chemical Vapor Deposition (CVD) growth process and may include post-growth treatment. Type IIa

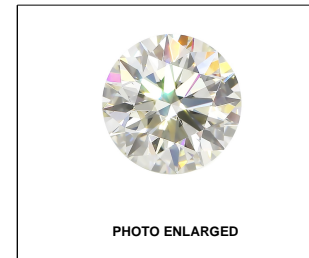


CLARITY CHARACTERISTICS



KEY TO SYMBOLS

Red symbols indicate internal characteristics. Green symbols indicate external characteristics.



LABGROWN IGI LG462140122

LASERSCRIBESM

ADDITIONAL GRADING INFORMATION

Polish VERY GOOD

Symmetry EXCELLENT

Fluorescence NONE

Inscription(s) LABGROWN IGI LG462140122

Comments: This Laboratory Grown Diamond was created by Chemical Vapor Deposition (CVD) growth process and may include post-growth treatment. Type IIa



IGI

02/08/2021 IGI Report No. LG462140122 ROUND BRILLIANT 6.30 - 6.33 x 3.79 mm 0.92 CARAT E SI 1 IDEAL 60% 59% Thin To Medium (Faceted) Pointed VERY GOOD EXCELLENT NONE LABGROWN IGI LG462140122

Comments: Laboratory Grown Diamond was created by Chemical Vapor Deposition (CVD) growth process and may include post-growth treatment. Type IIa