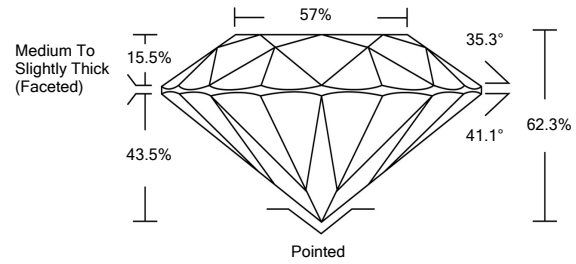




LG462136765

LABORATORY GROWN DIAMOND REPORT

PROPORTIONS



GRADING SCALES

Table with 5 columns for Color Grading Scale (CL, NC, FT, VLT, LT) and Clarity (10x) Grading Scale (FL, IF, VVS, VS, SI, I). Includes sub-labels like 'COLORLESS D-F', 'NEAR COLORLESS G-J', etc.

The laboratory grown diamond described in this Report (Report) has been graded, tested, analyzed, examined and/or inscribed by International Gemological Institute (IGI). A laboratory grown diamond is one that has essentially the same chemical, physical and optical properties as a mined diamond...

02/04/2021 IGI Report Number LG462136765

Shape and Cutting Style ROUND BRILLIANT

Measurements 7.46 - 7.50 x 4.67 mm

GRADING RESULTS

Carat Weight 1.61 CARAT

Color Grade E

Clarity Grade VS 2

Cut Grade IDEAL

ADDITIONAL GRADING INFORMATION

Polish EXCELLENT

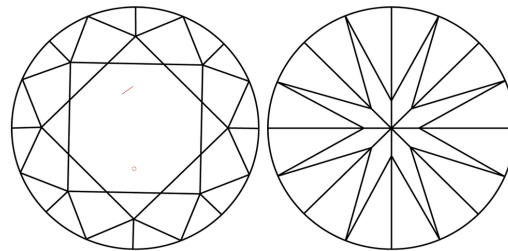
Symmetry EXCELLENT

Fluorescence NONE

Inscription(s) LABGROWN IGI LG462136765

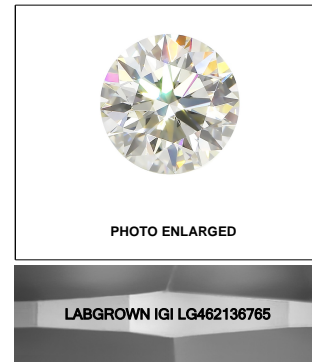
Comments: This Laboratory Grown Diamond was created by Chemical Vapor Deposition (CVD) growth process and may include post-growth treatment. Type IIa

CLARITY CHARACTERISTICS



KEY TO SYMBOLS

Red symbols indicate internal characteristics. Green symbols indicate external characteristics.

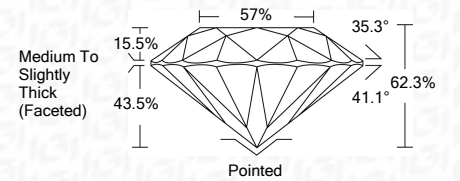


LASERSCRIBE SM

02/04/2021 IGI Report Number LG462136765 Shape and Cutting Style ROUND BRILLIANT Measurements 7.46 - 7.50 x 4.67 mm

GRADING RESULTS

Carat Weight 1.61 CARAT Color Grade E Clarity Grade VS 2 Cut Grade IDEAL



ADDITIONAL GRADING INFORMATION

Polish EXCELLENT Symmetry EXCELLENT Fluorescence NONE Inscription(s) LABGROWN IGI LG462136765

Comments: This Laboratory Grown Diamond was created by Chemical Vapor Deposition (CVD) growth process and may include post-growth treatment. Type IIa



IGI

02/04/2021 IGI Report No. LG462136765 ROUND BRILLIANT 7.46 - 7.50 x 4.67 mm 1.61 CARAT E VS 2 IDEAL 62.3% 57% Medium To Slightly Thick (Faceted) Pointed EXCELLENT EXCELLENT NONE LABGROWN IGI LG462136765

Comments: Laboratory Grown Diamond was created by Chemical Vapor Deposition (CVD) growth process and may include post-growth treatment. Type IIa