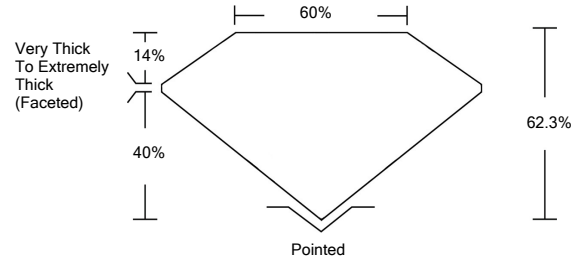




LG459195819

LABORATORY GROWN DIAMOND REPORT

PROPORTIONS



GRADING SCALES

Table with 5 columns for Color Grading Scale (CL, NC, FT, VLT, LT) and Clarity (10x) Grading Scale (FL, IF, VVS, VS, SI, I). Includes sub-labels like 'COLORLESS D-F', 'NEAR COLORLESS G-J', etc.

The laboratory grown diamond described in this Report (Report) has been graded, tested, analyzed, examined and/or inscribed by International Gemological Institute (IGI). A laboratory grown diamond is one that has essentially the same chemical, physical and optical properties as a mined diamond...

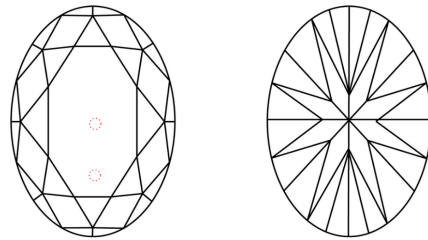
01/13/2021 IGI Report Number LG459195819 Shape and Cutting Style OVAL BRILLIANT Measurements 11.21 x 7.83 x 4.88 mm

GRADING RESULTS Carat Weight 3.04 CARATS Color Grade G Clarity Grade VS 2

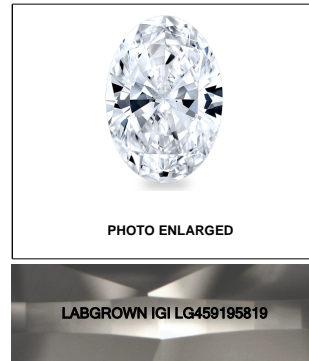
ADDITIONAL GRADING INFORMATION Polish VERY GOOD Symmetry VERY GOOD Fluorescence NONE Inscription(s) LABGROWN IGI LG459195819

Comments: As Grown - No indication of post-growth treatment. This Laboratory Grown Diamond was created by Chemical Vapor Deposition (CVD) growth process. Type IIa

CLARITY CHARACTERISTICS

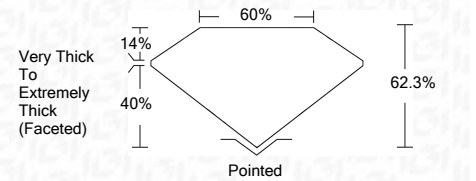


KEY TO SYMBOLS Red symbols indicate internal characteristics. Green symbols indicate external characteristics.



01/13/2021 IGI Report Number LG459195819 Shape and Cutting Style OVAL BRILLIANT Measurements 11.21 x 7.83 x 4.88 mm

GRADING RESULTS Carat Weight 3.04 CARATS Color Grade G Clarity Grade VS 2



ADDITIONAL GRADING INFORMATION Polish VERY GOOD Symmetry VERY GOOD Fluorescence NONE Inscription(s) LABGROWN IGI LG459195819

Comments: As Grown - No indication of post-growth treatment. This Laboratory Grown Diamond was created by Chemical Vapor Deposition (CVD) growth process. Type IIa



IGI

01/13/2021 IGI Report No. LG459195819 OVAL BRILLIANT 11.21 x 7.83 x 4.88 mm 3.04 CARATS G VS 2 62.3% 60% Very Thick To Extremely Thick (Faceted) Pointed VERY GOOD VERY GOOD NONE NONE LABGROWN IGI LG459195819

As Grown - No indication of post-growth treatment. This Laboratory Grown Diamond was created by Chemical Vapor Deposition (CVD) growth process. Type IIa