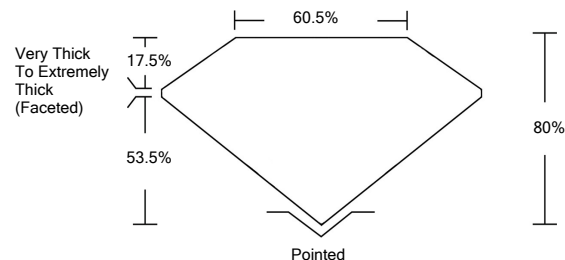




LG459195503

LABORATORY GROWN DIAMOND REPORT

PROPORTIONS

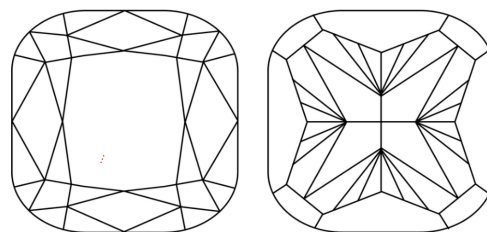


GRADING SCALES

Table with 5 columns for Color Grading Scale (CL, NC, FT, VLT, LT) and Clarity (10x) Grading Scale (FL, IF, VVS, VS, SI, I). Includes sub-labels like 'COLORLESS D-F', 'NEAR COLORLESS G-J', etc.

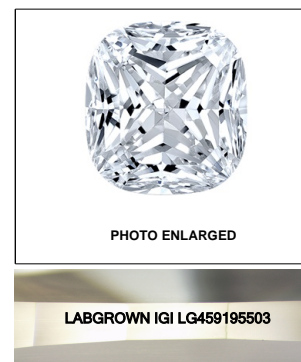
The laboratory grown diamond described in this Report (Report) has been graded, tested, analyzed, examined and/or inscribed by International Gemological Institute (IGI). A laboratory grown diamond is one that has essentially the same chemical, physical and optical properties as a mined diamond...

CLARITY CHARACTERISTICS



KEY TO SYMBOLS

Red symbols indicate internal characteristics. Green symbols indicate external characteristics.



01/22/2021

IGI Report Number LG459195503

Shape and Cutting Style SQUARE CUSHION BRILLIANT

Measurements 6.53 x 6.40 x 5.12 mm

GRADING RESULTS

Carat Weight 1.83 CARAT

Color Grade E

Clarity Grade VVS 2

ADDITIONAL GRADING INFORMATION

Polish VERY GOOD

Symmetry VERY GOOD

Fluorescence NONE

Inscription(s) LABGROWN IGI LG459195503

Comments: As Grown - No indication of post-growth treatment. This Laboratory Grown Diamond was created by Chemical Vapor Deposition (CVD) growth process. Type IIa



Summary table of report details: IGI Report No. LG459195503, SQUARE CUSHION BRILLIANT, 6.53 x 6.40 x 5.12 mm, 1.83 CARAT, VVS 2, E, 80%, 60.5%, Very Thick To Extremely Thick (Faceted), Pointed, VERY GOOD, VERY GOOD, NONE, LABGROWN IGI LG459195503.

