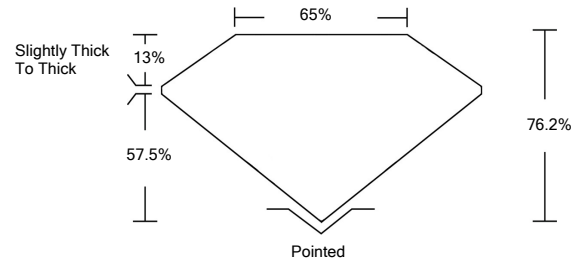




LG459108343

LABORATORY GROWN DIAMOND REPORT

PROPORTIONS



GRADING SCALES

Table with 5 columns for Color Grading Scale (CL, NC, FT, VLT, LT) and Clarity (10x) Grading Scale (FL, IF, VVS, VS, SI, I). Includes sub-labels like 'COLORLESS D-F', 'NEAR COLORLESS G-J', etc.

The laboratory grown diamond described in this Report (Report) has been graded, tested, analyzed, examined and/or inscribed by International Gemological Institute (IGI). A laboratory grown diamond is one that has essentially the same chemical, physical and optical properties as a mined diamond...

01/29/2021 IGI Report Number LG459108343

Shape and Cutting Style CUT CORNERED RECTANGULAR MODIFIED BRILLIANT

Measurements 6.31 x 5.05 x 3.85 mm

GRADING RESULTS

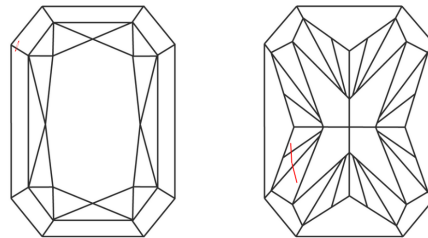
Carat Weight 1.07 CARAT Color Grade D Clarity Grade SI 1

ADDITIONAL GRADING INFORMATION

Polish VERY GOOD Symmetry VERY GOOD Fluorescence NONE Inscription(s) LABGROWN IGI LG459108343

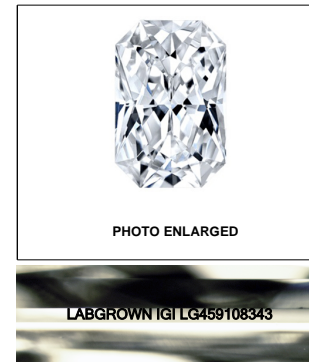
Comments: As Grown - No indication of post-growth treatment. This Laboratory Grown Diamond was created by High Pressure High Temperature (HPHT) growth process. Type II

CLARITY CHARACTERISTICS



KEY TO SYMBOLS

Red symbols indicate internal characteristics. Green symbols indicate external characteristics.



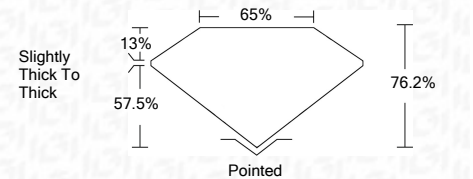
LASERSCRIBE SM

01/29/2021 IGI Report Number LG459108343 Shape and Cutting Style CUT CORNERED RECTANGULAR MODIFIED BRILLIANT

Measurements 6.31 x 5.05 x 3.85 mm

GRADING RESULTS

Carat Weight 1.07 CARAT Color Grade D Clarity Grade SI 1



ADDITIONAL GRADING INFORMATION

Polish VERY GOOD Symmetry VERY GOOD Fluorescence NONE Inscription(s) LABGROWN IGI LG459108343

Comments: As Grown - No indication of post-growth treatment. This Laboratory Grown Diamond was created by High Pressure High Temperature (HPHT) growth process. Type II



IGI

01/29/2021 IGI Report No. LG459108343 CUT CORNERED RECT. MODIFIED BRILLIANT 6.31 x 5.05 x 3.85 mm 1.07 CARAT D SI 1 76.2% 65% Slightly Thick To Thick Pointed VERY GOOD VERY GOOD NONE LABGROWN IGI LG459108343

As Grown - No indication of post-growth treatment. This Laboratory Grown Diamond was created by High Pressure High Temperature (HPHT) growth process. Type II