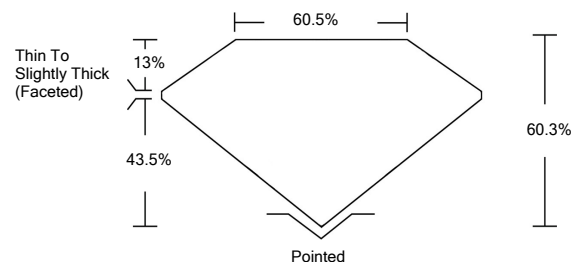




LG459108008

LABORATORY GROWN DIAMOND REPORT

PROPORTIONS



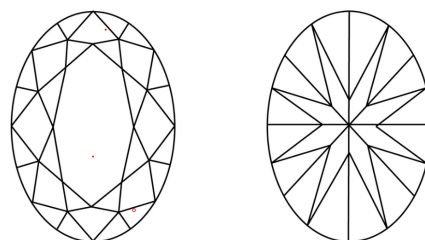
GRADING SCALES

| | | | | | |
|-----------------------------|------------------------------|-----------------------------|------------------------|-------------------|-----------|
| COLOR GRADING SCALE | CL | NC | FT | VL | LT |
| | COLORLESS D-F | NEAR COLORLESS G-J | FAINT K-M | VERY LIGHT N-R | LIGHT S-Z |
| CLARITY (10x) GRADING SCALE | FL | VVS | VS | SI | I |
| | FLAWLESS INTERNALLY FLAWLESS | VERY VERY SLIGHTLY INCLUDED | VERY SLIGHTLY INCLUDED | SLIGHTLY INCLUDED | INCLUDED |

The laboratory grown diamond described in this Report (Report) has been graded, tested, analyzed, examined and/or inscribed by International Gemological Institute (IGI). A laboratory grown diamond is one that has essentially the same chemical, physical and optical properties as a mined diamond, with the exception of being grown by man (a manufactured product). IGI employs and utilizes those techniques and equipment currently available to IGI, including, without limitation, 10X magnification, corrected triplet loupe, binocular microscope, master color comparison stones, non-contact-optical measuring device, Diamond Sure™, Diamond View™, Spectrophotometer and such other instruments and/or processes as deemed appropriate by IGI. This Report includes advanced security features. A duly accredited gemologist or jeweler can advise you with respect to the importance of and interrelationship between cut, color, clarity and carat weight.

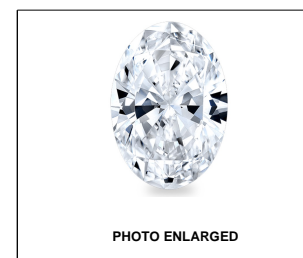
© INTERNATIONAL GEMOLOGICAL INSTITUTE, INC.

CLARITY CHARACTERISTICS



KEY TO SYMBOLS

Red symbols indicate internal characteristics. Green symbols indicate external characteristics.



LABGROWN IGI LG459108008

LASERSCRIBESM

01/28/2021

IGI Report Number LG459108008

Shape and Cutting Style OVAL BRILLIANT

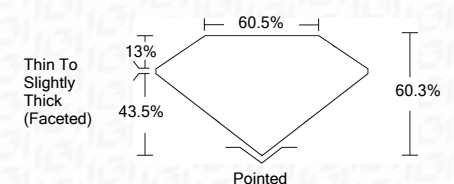
Measurements 8.30 x 5.84 x 3.52 mm

GRADING RESULTS

Carat Weight 1.07 CARAT

Color Grade K

Clarity Grade VS 1



ADDITIONAL GRADING INFORMATION

Polish EXCELLENT

Symmetry EXCELLENT

Fluorescence NONE

Inscription(s) LABGROWN IGI LG459108008

Comments: This Laboratory Grown Diamond was created by Chemical Vapor Deposition (CVD) growth process and may include post-growth treatment. Type IIa Faint Brown



IGI

| | | | |
|------------|----------------------------|----------------------------------|--------------|
| 01/28/2021 | IGI Report No. LG459108008 | 1.07 CARAT | K |
| | OVAL BRILLIANT | 60.5% | VS 1 |
| | 8.30 x 5.84 x 3.52 mm | 43.5% | 60.3% |
| | Carat Weight | Thin To Slightly Thick (Faceted) | Pointed |
| | Color Grade | EXCELLENT | EXCELLENT |
| | Clarity Grade | EXCELLENT | EXCELLENT |
| | Depth | NONE | NONE |
| | Table | LABGROWN IGI | LABGROWN IGI |
| | Girdle | LG459108008 | LG459108008 |
| | Culet | | |
| | Polish | | |
| | Symmetry | | |
| | Fluorescence | | |
| | Inscription(s) | | |
| | Comments: | | |

This Laboratory Grown Diamond was created by Chemical Vapor Deposition (CVD) growth process and may include post-growth treatment. Type IIa Faint Brown

