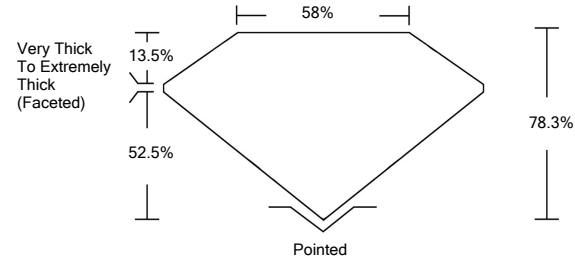




LG459105744

LABORATORY GROWN DIAMOND REPORT

PROPORTIONS

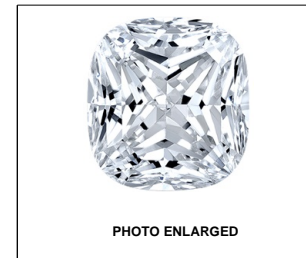


GRADING SCALES

Table with 5 columns for Color Grading Scale (CL, NC, FT, VLT, LT) and Clarity (10x) Grading Scale (FL, IF, VVS, VS, SI, I). Includes sub-labels like 'COLORLESS D-F', 'NEAR COLORLESS G-J', etc.

The laboratory grown diamond described in this Report (Report) has been graded, tested, analyzed, examined and/or inscribed by International Gemological Institute (IGI). A laboratory grown diamond is one that has essentially the same chemical, physical and optical properties as a mined diamond...

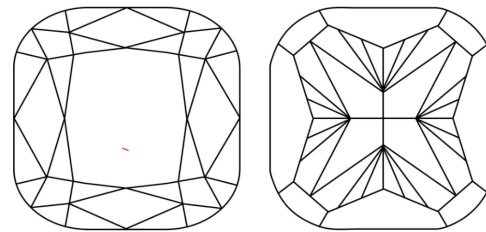
© INTERNATIONAL GEMOLOGICAL INSTITUTE, INC.



LABGROWN IGI LG459105744

LASERSCRIBESM

CLARITY CHARACTERISTICS



KEY TO SYMBOLS

Red symbols indicate internal characteristics. Green symbols indicate external characteristics.

01/27/2021

IGI Report Number LG459105744

Shape and Cutting Style SQUARE CUSHION BRILLIANT

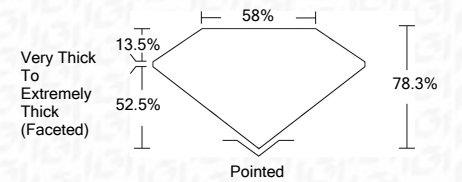
Measurements 6.23 x 5.99 x 4.69 mm

GRADING RESULTS

Carat Weight 1.52 CARAT

Color Grade I

Clarity Grade VVS 2



ADDITIONAL GRADING INFORMATION

Polish VERY GOOD

Symmetry VERY GOOD

Fluorescence NONE

Inscription(s) LABGROWN IGI LG459105744

Comments: This Laboratory Grown Diamond was created by Chemical Vapor Deposition (CVD) growth process and may include post-growth treatment. Type IIa



IGI



Summary table of report details: IGI Report No. LG459105744, SQUARE CUSHION BRILLIANT, 6.23 x 5.99 x 4.69 mm, 1.52 CARAT, VVS 2, I, VERY GOOD, VERY GOOD, NONE, LABGROWN IGI LG459105744.

This Laboratory Grown Diamond was created by Chemical Vapor Deposition (CVD) growth process and may include post-growth treatment. Type IIa