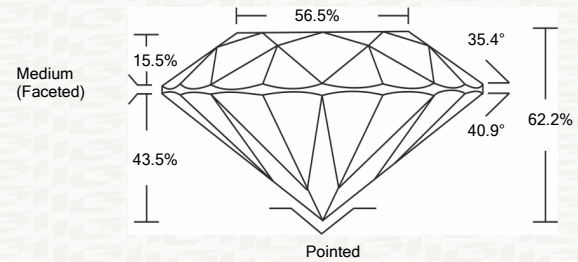




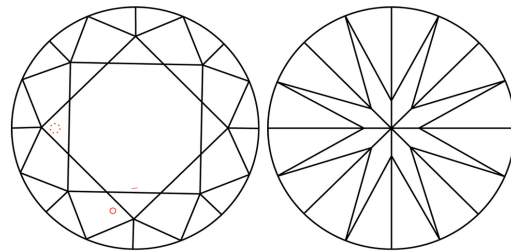
IGI GEMOLOGICAL REPORT

ADDITIONAL INFORMATION

PROPORTIONS



CLARITY CHARACTERISTICS



KEY TO SYMBOLS

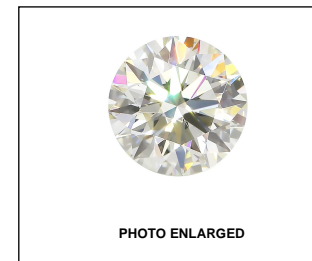
Red symbols indicate internal characteristics. Green symbols indicate external characteristics.

This Report is subject to the terms and conditions © IGI 2000, edition 2019 all rights reserved.

GRADING SCALES

Table with 2 rows and 5 columns showing grading scales for Color and Clarity.

The laboratory grown diamond described in this Report (Report) has been graded, tested, analyzed, examined and/or inscribed by International Gemological Institute (IGI)...

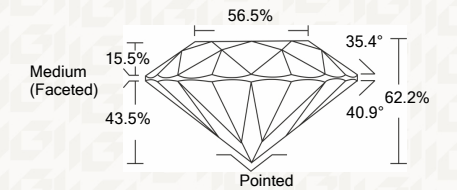


LASERSCRIBE SM



IGI LABORATORY GROWN DIAMOND GRADING REPORT

12/29/2020 IGI Report Number LG457048974 Shape and Cutting Style ROUND BRILLIANT Measurements 8.08 - 8.13 X 5.05 MM GRADING RESULTS Carat Weight 2.04 CARATS Color Grade K Clarity Grade VS 2 Cut Grade IDEAL



ADDITIONAL GRADING INFORMATION

Polish EXCELLENT Symmetry EXCELLENT Fluorescence NONE Inscription(s) LABGROWN IGI LG457048974

Comments: This Laboratory Grown Diamond was created by Chemical Vapor Deposition (CVD) growth process. Type IIa



IGI

12/29/2020 IGI Report No. LG457048974 ROUND BRILLIANT 8.08 - 8.13 X 5.05 MM Carat Weight 2.04 CARATS Color Grade K VS 2 IDEAL 62.2% 56.5% Medium (Faceted) Polished EXCELLENT EXCELLENT NONE LABGROWN IGI LG457048974 Comments: This Laboratory Grown Diamond was created by Chemical Vapor Deposition (CVD) growth process. Type IIa

